

A wooden sign with orange lettering is positioned in a grassy area. Behind the sign is a large tree with yellow and orange leaves, and a dense forest of tall green pine trees under a blue sky with light clouds. The sign is mounted on a concrete base.

EL CERRITO FOUNDATION
MEMORIAL GROVE
CITY OF EL CERRITO - HILLSIDE NATURE AREA



2020 Google

Google Earth



2020 Google

Google Earth





17

18

16



15

14

13

12

11

10

26

9

8

25

27

7

6

4

2

1

5

3

Google Earth

Flannel Bush – *Fremontodendron californicum*



Catalina Cherry – *Prunus ilicifolia* ssp. *lyonii*



Channel Island endemic subspecies



Firethorn – *Pyracantha* sp.





4

Lemonade Berry – *Rhus integrifolia*



Southern California native

Incense Cedar – *Calocedrus decurrens*



6

Coast live oak – *Quercus agrifolia*



Silk tassel – *Garrya sp.*





8

Toyon – *Heteromeles arbutifolia*





17

18

16



15

14

13

12

11

10

26

9

8

25

2

27

7

6

1

4

3

5

Google Earth





9

Redwood – *Sequoia sempervirens*



Canary Island pine – *Pinus canariensis*



Afghan pine – *Pinus eldarica*





12

Monterey Cypress – *Cupressus macrocarpa*





13

Manzanita – *Manzanita sp.*





14

Coulter pine – *Pinus coulteri*



Stone pine – *Pinus pinea*





17
18

16



15

14

13

12

11

10

26

9

8

25

27

7

6

4

1

2

5

3

Google Earth





16

Black elderberry – *Sambucus nigra*



Blue gum, Eurabbie – *Eucalyptus globulosa*





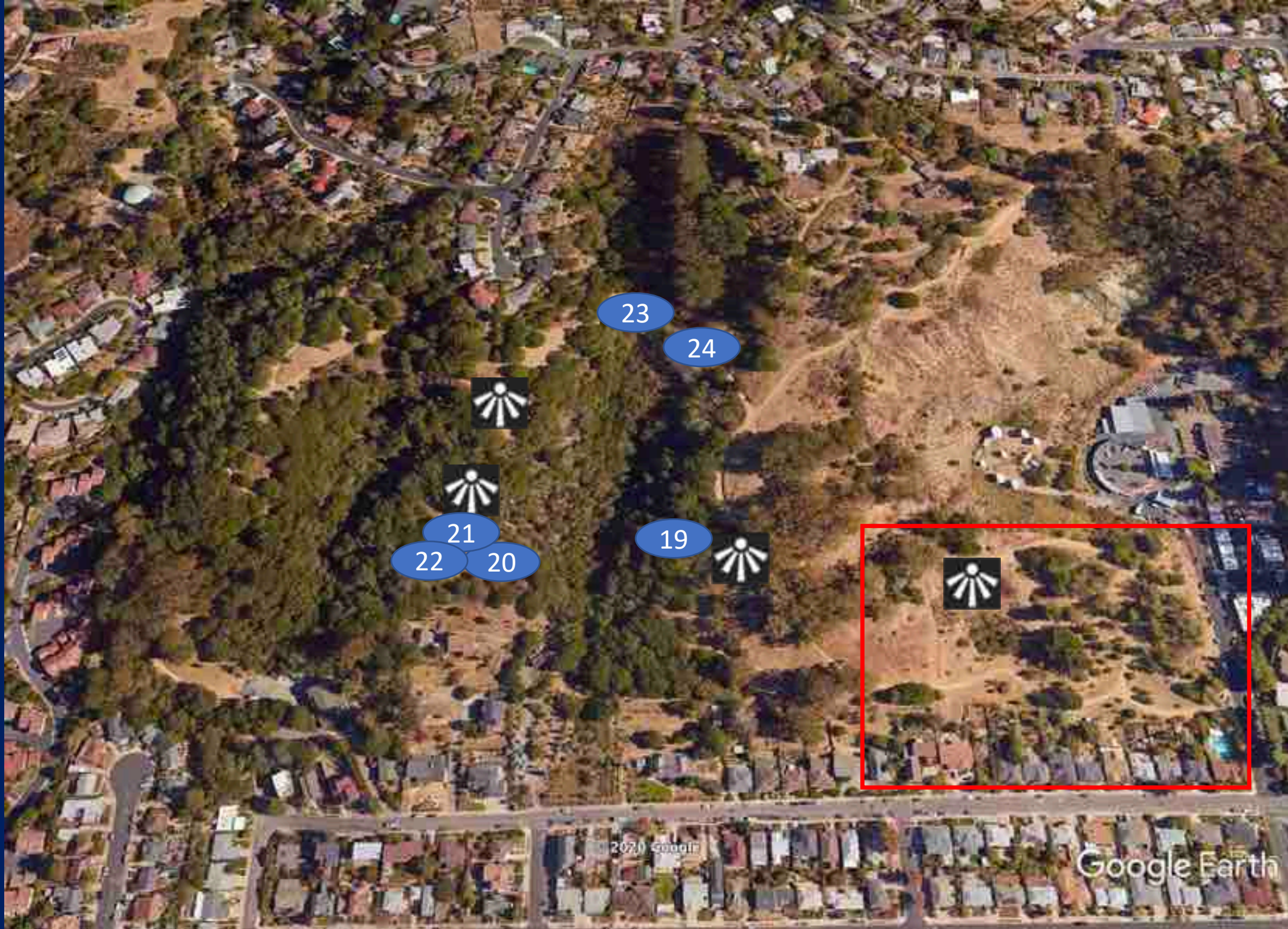


18

Poison oak – *Toxicodendron diversilobum*







23

24



21

22

20

19



2020 Google

Google Earth







19

California bay – *Umbellularia californica*







20

Coyote brush –
Baccharis pilularis





Olive – *Olea europaea*



Cotoneaster –
Cotoneaster sp.







Loquat –
Eriobotrya japonica





24

Elm –
Ulmus alata?











17

18

16



15

14

13

12

11

10

26

9

8

25

2

27

7

6

1

4

3

5

Google Earth

25

Peruvian pepper tree – *Schinus molle*





26

Plum cherry –
Prunus cerasifera





27

Monterey pine – *Pinus radiata*





EL CERRITO FOUNDATION
MEMORIAL GROVE

CITY OF EL CERRITO / HILLSIDE NATURE AREA

calflora.org

Quick resource to see the distribution of CA native plants with links to other useful information

California Taxon Report - Foto

Rhus integrifolia (Nutt.) Smith & Hook. f. ex Robt.
Lemonade berry, Lemonade sumac

Rhus integrifolia, a shrub, is a shrub that is native to California. It is found only slightly beyond California borders.

Plant Distribution

Observation Search (1546 records)

Plant Characteristics

Bloom Period

Photos from CalPhotos / Calflora

Family: ANACARDIACEAE
Genus: Rhus

© 2019 Ron Vanderhoff

© 2020 Hyatt Baker

photo size

Community: Coastal Sage Scrub, Chaparral

© 2020 Calflora

Name Status:
Accepted by JEF + PLANTS

More information about *Rhus integrifolia*

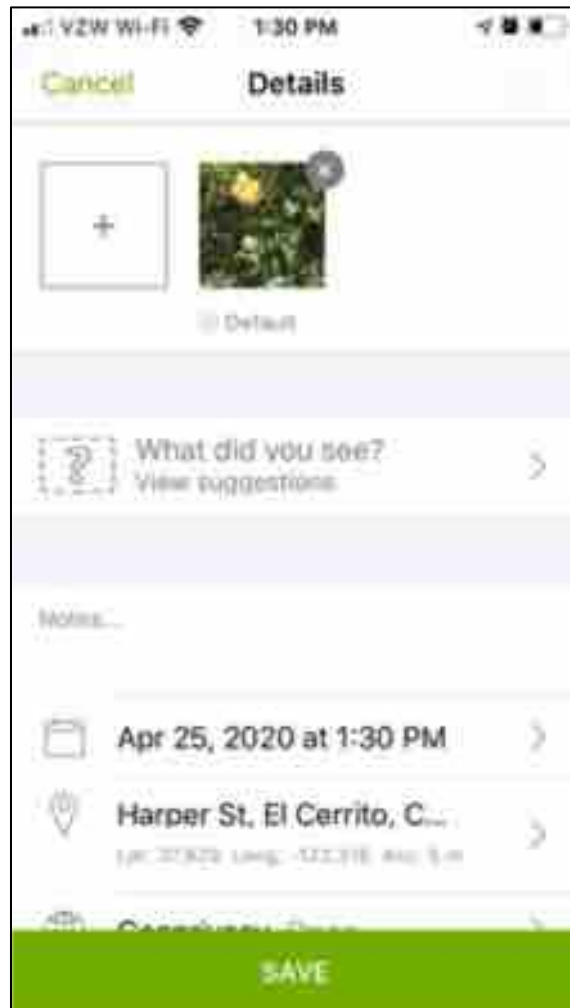
Nursery availability from CNPLX
This plant is available commercially

Japan efforts
USDA PLANTS Profile (RHND)

ITS Original Publication citation
International Plants Name Index
Search efloras.org (Flora of North America)
Landscape information from Calcepage
Photos on PanID.net / Google Images
Consortium of California Herbaria

Add an Observation
Location Suitability
Planting Guide
Distribution by County

iNaturalist.org



Observations by you on April 25, 2020

29 total


30 observations

- 20 from Central Coast County, CA, US
- 10 from California, US
- 1 from United States
- 1 from North America

16 life list finds

- 10 from Bay and Thomas Rivers
- 1 from Canary Island Pine
- 1 from Stone Pine
- 1 from Turkish Pine
- 1 from Algerian Pine
- 1 from Pinus

Map Satellite



Google

Screenshot

<https://www.inaturalist.org/calendar/dackerly/2020/4/25>



About

Join 143

Help us celebrate the 5th anniversary of the City Nature Challenge and the 50th anniversary of Earth Day! Besides Los Angeles, San Francisco is the only city to now have participated in the City Nature Challenge for five full years - each year we're documenting the amazing and unique biodiversity of the Bay Area, creating an incredible dataset that you'll be proud to explore. [Read More >](#)

Project Journal

Overview

14,580

OBSERVATIONS

2,220

SPECIES

490

IDENTIFIERS

1,459

DESIGNERS

Stats

Recent Observations

View All



Most Observations

marymchurchill

325



Most Species

catchang

175



Most Observed Species

California Poppy

156

As of 9:30 this morning

Thank you!

And thanks to Pam Austin, David
Weinstein and the El Cerrito Trekkers

